





Avers Screens company was established in 1996 at a tiny room hired in Warszawa as a system integration dealer. Successful completion of several Projects for prestigious end customers let us catch the draft and move to own location at garage. Company profile was changed from dealer to local distributor and evaluation of own products have started. The first Avers brand products were table for head-up display and projector ceiling bracket "ProMount".

Cumulus - projection screen was evaluated in 2000 as the first Avers brand projection screen. It was designed and developed completely at our company. Mass production of the screens have started in 2001. New models and improvements to previous series were introduced year by year as a result of Avers R&D department activities. Attractive design, good quality and affordable price were key factors of local market success. Raising demand for Avers products required relevant investments and expansion of manufacturing capability, so the new factory located in Pruszków was opened in 2008. Same year we have reached leading position at the Polish market as manufacturer of projection screens. Avers keep this position until today. Product quality is the result of quality control system we have developed parallel to our products. Avers quality control system obtained ISO9001 certificate in 2007. The certificate is confirmed and updated year by year during ISO 9001 audits.

Avers projection screens and accessories are available at the network of 100 local business partners. Sales network still under development, so the number of partners increase all the time.

Avers have began International activities attending Photokina in Cologne in 2004. Since then we present Avers products at the largest European system integration business fair, the ISE in Amsterdam. We have started overseas activities in 2010 presenting Avers products at PALME Middle East exhibition in Dubai. Avers products are already available in 20 countries in Europe and Midle East.

Business success would not happen without our skilled and experienced team:



**Paweł Zielinski**  
Managing director and chief developer (16 years Avers experience)



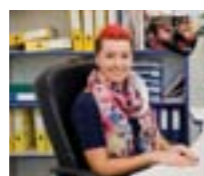
**Jacek Łosiewicz**  
Sales Manager (5 years Avers experience)



**Zbigniew Cudnik**  
Salesman



**Eligiusz Kowalczyk**  
Quality control (13 years Avers experience)



**Olga Prentkowska**  
Logistics



Certificate number P114



Certificate number 127



## General information

- 04. Projection screens
- 07. Automated presentation system



## Electric Screens

- 08. Solar
- 09. Solaris
- 10. Contour Tension
- 11. Contour
- 12. Cumulus X Tension
- 13. Cumulus X
- 14. Stratus
- 15. Focus
- 16. Lunar



## Manual Screens

- 17. Cirrus X
- 18. Cirrus X Crank
- 19. Cirrus CL
- 20. Altus
- 20. Tripod



## Frame Screens

- 21. Nimbus



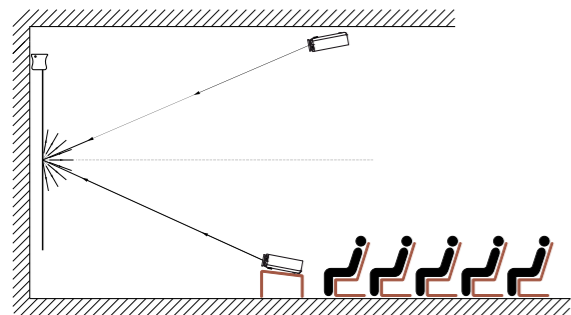
## Presentation Accessories

- 22. Control systems
- 24. Brackets
- 25. Lifts
- 26. Virgo
- 27. Accessories

Picture projection is a picture phenomenon, it seems to be very easy and non problematic. The picture is a result of reflection of the light from the projector and environment light at the surface of the projection screen. The projection fabrics is the main and most important screen component. Type of projection surface and its optical parameters decides about the picture quality and presentation. Fabrics characteristics are described with the following parameters: Gain and viewing angle. Relative reflection coefficient called Gain, describes the amount of light reflected by the surface related to the amount of light reflected by the standard surface. Standard surface is covered either with either magnesium carbonate ( $MgCO_3$ ) either titanium dioxide ( $TiO_2$ ). Both chemical substances are white and they reflect light lossless. Standard fabrics gain is 1.

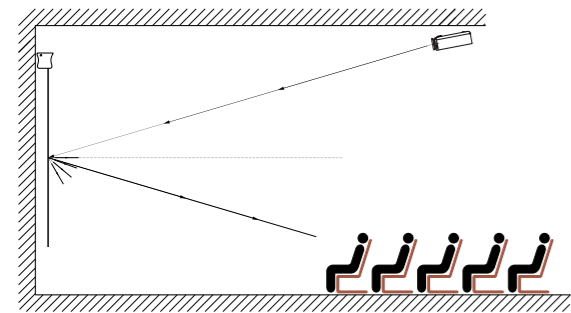
Viewing angle describes the maximum angle the projected picture could be observed without quality decrease. The picture brightness is biggest when observed perpendicularly to the surface and decreases with the increase of the viewing angle. The angle, observed picture brightness decreases to 50% of the maximum value is declared as fabrics Viewing Angle. There is close relation between the Viewing angle and gain parameters. The surfaces with large Gain has Viewing Angle smaller then surfaces with small Gain.

Depending on the light reflection characteristics there are the following projection surfaces: diffusion, reflective, retro-reflective and diffusion-reflective.



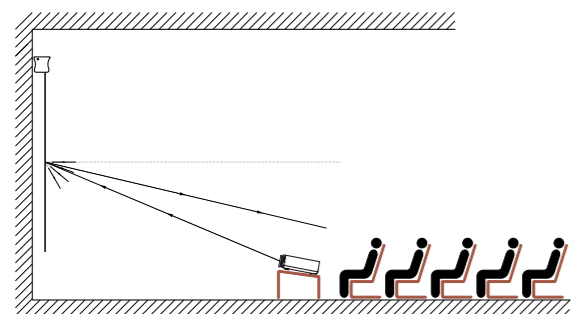
## DIFFUSION SURFACES

They reflect light evenly diffusing it into the space with wide viewing angle. The Gain of the diffusion surfaces is very close to 1. The projector installation method ( ceiling, table, with optical angle shift) do not change the quality of the picture displayed at the diffusive surface. Matt White, Matt Grey, White Ice fabrics and White Glass panel are diffusion projection surfaces.



## REFLECTIVE SURFACES

They reflect light directionally into the space similar as mirror. Such reflection characteristics offers higher picture brightness when observed from the direction the light is reflected to, but the viewing angle is limited. Typical Gain values of reflective surfaces are from the range 1,5 to 3,0. Projection systems with reflective surfaces requires exact positioning of projector, screen and audience. Silver P fabrics is reflective projection surface.

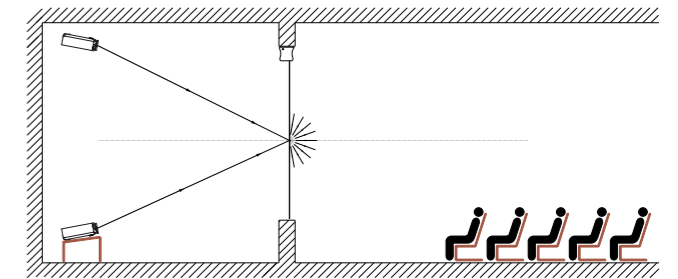


## RETRO-REFLECTIVE SURFACES

They reflect light directionally back to the light source. High picture brightness will be observed from the right direction or the very narrow viewing angle. Typical Gain values of retro-reflective surfaces are from 2,0 to 2,5. Projection systems with retro-reflective surfaces requires projector and audience to be located at the same level and direction. Glass Beaded projection fabrics are retro-reflective surfaces.

## DIFFUSION-REFLECTIVE SURFACES

They transmit and diffuse light into the space. High picture brightness is guaranteed at limited viewing angle only. Typical Gain values of diffusion-reflective surfaces are from the range 2,5 to 4.0. Projection systems with diffusion-reflective surfaces requires precise positioning of projector, screen and audience due to very narrow surface viewing angle. Rear projection fabrics New Coral and Rear projection panels Grey Glass are Diffusion-reflective surfaces.



## SCREEN BLACK BORDERS

Projection screens should have black borders. It is not just a decorative element, but it improves perception of the projected picture quality. The black border separates optically the picture from the background and limits viewers attention to the displayed content. The projected picture surrounded with black bordering is recognized as brighter and higher contrast than picture projected at the same surface but without black borders. On top of that the black borders moves the projected image away from the fabrics edges, so any surface flatness imperfections happening at the fabrics side edges will not affect the image quality. Additional black belt over the picture area is required to lower the position of the picture area, so its bottom edge would be at the ergonomic height. Additional advantage of the wide top border is reduction of light reflected from the screen to the ceiling and increasing ambient light level at the area.

## PROJECTION SCREEN SELECTION RULES

### 1) TYPE OF SCREEN

There are many types of screens at our offer:

- Electric projection screens
- Manually operated projection screens
- Frame screens for fixed installations
- Portable projection screens

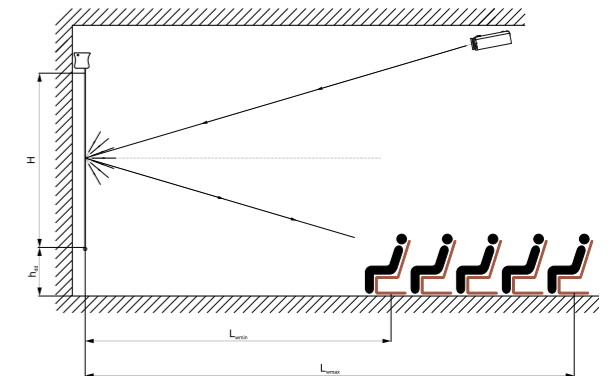
Portable projection screens are recommended if you plan to project pictures at different places and in different conditions. In case of fixed screen installation the selection of electric, manually operated or fixed frame screen depends on the user's individual preferences and planned budget.

### 2) PICTURE ASPECT RATIO

Projection devices display the images of the width to height ratio determined by the unit construction. It is called picture aspect ratio. Projection screen viewing area should have the same aspect ratio as the projection device used in the system. This will guarantee optimal projection performance.

Typical aspect ratios of projection devices and screens:

- 1:1 Full aspect ratio
- 4:3 Video aspect ratio
- 16:9 HDTV wide aspect ratio
- 16:10 PC wide aspect ratio
- 21:9 Cinemascope aspect ratio





# AUTOMATED PRESENTATION SYSTEM

## 3) SCREEN SIZE AND INSTALLATION

Select the screen size and installation method following the rules described below.  
- Screens size. Distance between the last row of audience and the screen  $L_{wmax}$  should be multiple of screen height  $h$ :

$$L_{wmax} / H = \begin{cases} 6 & \text{(for presentation projection)} \\ 4.5 & \text{(for home cinema projection)} \\ 3 & \text{(for Full HD projection)} \end{cases}$$

Distance between the first audience row and the screen  $L_{wmin}$  should be in relation with screen height as well.  $L_{wmin} / H > 1,5$ , Picture width is calculated based on the Picture height and aspect ratio.

$$W = \begin{cases} h & \text{for 1:1 aspect ratio} \\ 4h/3 & \text{for 4:3 aspect ratio} \\ 16h/9 & \text{for 16:9 aspect ratio} \\ 16h/10 & \text{for 16:10 aspect ratio} \\ 1h/9 & \text{for 21:9 aspect ratio} \end{cases}$$

The screen should be installed at the ergonomic height, so the viewers could watch the displayed images comfortably

$$H_{bb} = \begin{cases} 120 - 140 \text{ cm} & \text{(for presentation projections)} \\ 60 - 80 \text{ cm} & \text{(for home cinema projections)} \end{cases}$$

Premises size, projector brightness, ambient light conditions should be kept in mind when calculating the screen size.

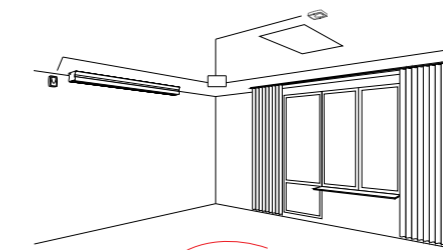
## SMART AND EASY INSTALLATION

Avers projection screens are designed for wall or ceiling installation. We have invented unique installation system to simplify the screen installation. Any of the installation systems elements is no visible after the screen installation. There is only 1 mm distance between the screen cassette and the ceiling, so the screen seems to be glued to the ceiling. The installation rails integrated with the screen cassette, ceiling bracket and the locking bolt are the 3 elements of the system. Installation of the screens up to 3,5 meter in the base requires: to drill just 2 holes in the ceiling, fix the brackets with 2 anchors, slide the screen rail at the bracket hinges, turn the screen at the position and secure it with the locking bolts. It is possible to fine tune the installed screen position horizontally in case it occurs after installation the picture is not displayed at the central position.

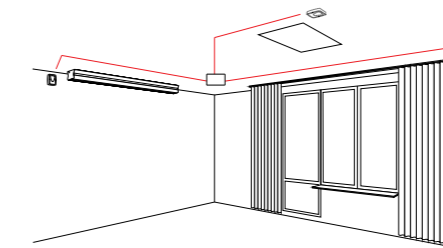
Screens dedicated for the in-ceiling installation at the recessed ceilings have dedicated modular design. There are 2 methods of screen installation depending on the recessed ceiling structure, screen surface is protected from dirt and damage during installation, inspections and maintenance of the installed screen are secured with the screen structure. The screen module and ceiling module remain hidden behind the masking module when the screen is installed. Disassembly of the masking module can be done by single person. It provides full access to all components of the screen behind.

Avers Screens products presented at the following pages could be used to integrate sophisticated projection systems with remote or automatic control. All electric appliances can be controlled either with Avers either 3rd party control systems. Please find below an reference projection system integrated with our products: electric projection screen, electric projector lift, lift dedicated ceiling flap, electric curtains Virgo system, BETA control system and a 3rd party projector. The system is operated remotely with the projector's remote transmitter. Switching the projector on will generate the control system by the BETA system transmitter. The signal is radio way transmitted to the controllers of electric engines of the screen, lift and curtains. The screen rolls out, the lift opens the flap and lowers the projector, the curtains blinds the windows. All devices stops automatically at the programmed positions, so the projection can be performed. After the projection is finished switching the projection off will cause rolling the screen in, hiding projector in the ceiling and opening of the curtains. BETA system controlling two types of devices (f.e. first type – screen and lift or second type two Virgo system). Our reference projection system can be used either for presentation either for home cinema applications.

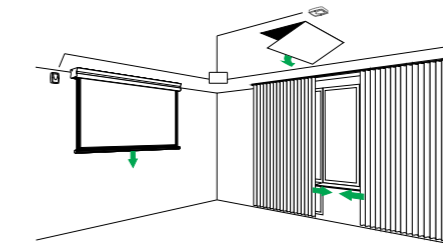
### SETTING PROJECTION UP:



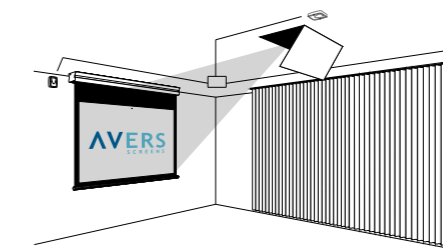
1 Switch on projector with remote transmitter



2 Transmission of the generated control signal to controllers

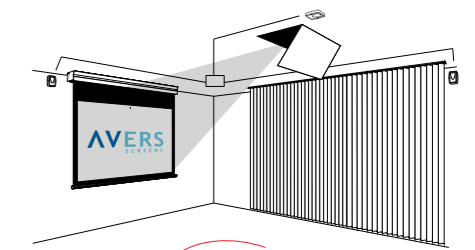


3 Automatic devices operation

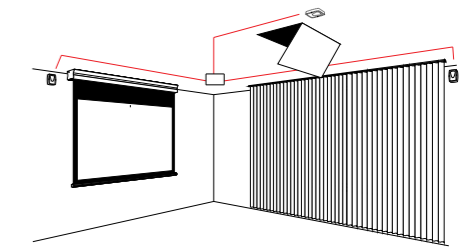


4 Projection system is ready for projection

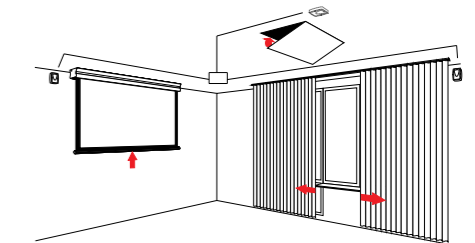
### END OF PROJECTION:



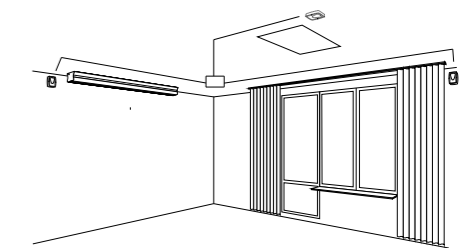
1 Switch off the projector with remote transmitter



2 Transmission of the generated control signal to controllers



3 Automatic devices operation



4 All devices are at stand-by status



BASIC EQUIPMENT SWITCH

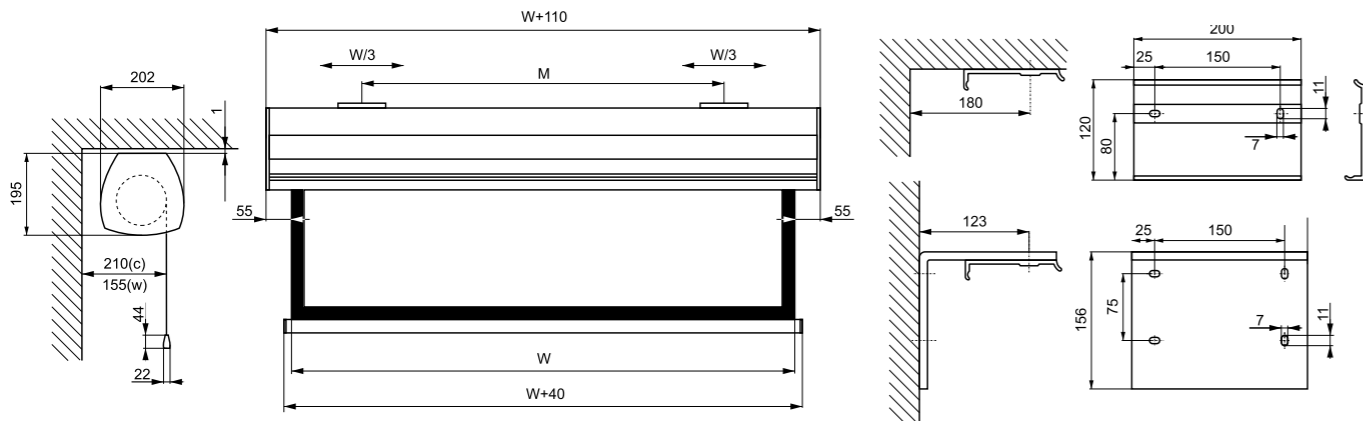


### FEATURES:

- Small size white powder painted aluminum alloy case with color elements
- Customized screen program capable
- Easy to install, "Invisible" installation brackets for wall or ceiling installation included
- Long life of the projection fabric secured with automatic stop for rolling and re-rolling
- Custom screen installation with finetuning of the stop points for rolling and re-rolling of the projection fabric
- 230 W silent tubular engine with 5 years guarantee
- Easy to integrate with external control systems
- Wire steering with the wall switch included
- 1:1, 4:3, 16:9 or 16:10 aspect ratios
- Fabrics width range: 450 - 600 cm
- Dedicated fabrics:
  - Silver P g=2,8 (3D Projection), Matt White P g=1,0, White Ice g=1,2, New Coral g=3,2 (Rear Projection)

### OPTIONAL ACCESSORIES:

- IR-remote control system (ALFA-IR)
- Radio remote control systems (ALFA-RADIO, DELTA)
- Projector trigger control systems (ALFA-TRIGGER, ALFA TRIGGER WIRELESS, BETA)
- RAL palette powder painting
- Wall/ceiling spacers
- Black border BB (4:3, 16:9 and 16:10 aspect ratios, MWP fabrics only)
- Black border BT (16:9 and 16:10 aspect ratio, MWP fabrics only)



Aspect ratio	Dimensions			Border		Image diagonal	Image diagonal BB, BT	Brackets distance	Weight	Transport box
	Fabrics Width	Viewable area	Viewable area BB, BT	BB type	BT type					
	W [cm]	w x h [cm]	w x h [cm]			[cale]	[cale]	M [cm]	[kg]	[cm]
1:1	450	450 x 450	-	-	-	251	-	240 - 438	80,00	500 x 25 x 25
1:1	500	500 x 500	-	-	-	278	-	280 - 488	90,00	550 x 25 x 25
4:3	450	450 x 338	440 x 330	+	-	222	217	240 - 438	80,00	500 x 25 x 25
4:3	500	500 x 375	490 x 368	+	-	246	241	280 - 488	90,00	550 x 25 x 25
4:3	550	550 x 413	540 x 405	+	-	271	269	320 - 538	97,00	600 x 25 x 25
4:3	600	600 x 450	590 x 443	+	-	295	290	360 - 588	106,00	650 x 25 x 25
16:9	450	450 x 253	440 x 248	+	+	203	199	240 - 438	80,00	500 x 25 x 25
16:9	500	500 x 281	490 x 276	+	+	226	221	280 - 488	90,00	550 x 25 x 25
16:9	550	550 x 309	540 x 304	+	+	248	247	320 - 538	97,00	600 x 25 x 25
16:9	600	600 x 338	590 x 332	+	+	271	267	360 - 588	106,00	650 x 25 x 25
16:10	450	450 x 281	440 x 275	+	+	209	204	240 - 438	80,00	500 x 25 x 25
16:10	500	500 x 313	490 x 306	+	+	232	227	280 - 488	90,00	550 x 25 x 25
16:10	550	550 x 344	540 x 338	+	+	255	254	320 - 538	97,00	600 x 25 x 25
16:10	600	600 x 375	590 x 369	+	+	279	274	360 - 588	106,00	650 x 25 x 25

### FEATURES:

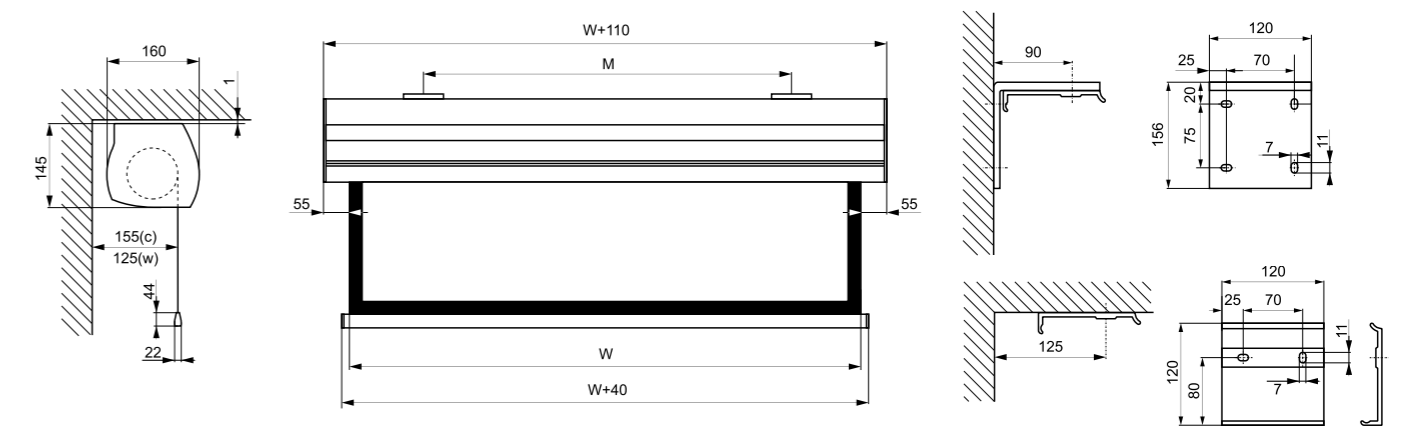
- Small size white powder painted aluminum alloy case with color elements
- Customized screen program capable
- Easy to install, "Invisible" installation brackets for wall or ceiling installation included
- Long life of the projection fabric secured with automatic stop for rolling and re-rolling
- Custom screen installation with finetuning of the stop points for rolling and re-rolling of the projection fabric.
- 230 W silent tubular engine with 5 years guarantee
- Easy to integrate with external control systems
- Wire steering with the wall switch included.
- 1:1, 4:3, 16:9 and 16:10 aspect ratios
- Fabrics width range: 350 - 400 cm
- Dedicated fabrics:
  - Silver P g=2,8 (3D Projection), Matt White P g=1,0, White Ice g=1,2, New Coral g=3,2 (Rear Projection)

### OPTIONAL ACCESSORIES:

- IR-remote control system (ALFA-IR)
- Radio remote control systems (ALFA-RADIO, DELTA)
- Projector trigger systems (ALFA-TRIGGER, ALFA TRIGGER WIRELESS, BETA)
- RAL palette powder painting
- Black border BB (4:3, 16:9 and 16:10 aspect ratios, MWP fabrics only)
- Black border BT (16:9 and 16:10 aspect ratio, MWP fabrics only)



BASIC EQUIPMENT SWITCH



Aspect ratio	Dimensions			Border		Image diagonal	Image diagonal BB, BT	Brackets distance	Weight	Transport box
	Fabrics Width	Viewable area	Viewable area BB, BT	BB type	BT type					
	W [cm]	w x h [cm]	w x h [cm]			[cale]	[cale]	M [cm]	[kg]	[cm]
1:1	350	350 x 350	-	-	-	195	-	180 - 345	63,00	390 x 25 x 25
1:1	400	400 x 400	-	-	-	223	-	210 - 395	71,00	440 x 25 x 25
4:3	350	350 x 263	340 x 255	+	-	172	167	180 - 345	63,00	390 x 25 x 25
4:3	400	400 x 300	390 x 293	+	-	197	192	210 - 395	71,00	440 x 25 x 25
16:9	350	350 x 197	340 x 191	+	+	158	154	180 - 345	63,00	390 x 25 x 25
16:9	400	400 x 225	390 x 219	+	+	181	176	210 - 395	71,00	440 x 25 x 25
16:10	350	350 x 219	340 x 213	+	+	162	158	180 - 345	63,00	390 x 25 x 25
16:10	400	400 x 250	390 x 244	+	+	186	181	210 - 395	71,00	440 x 25 x 25

# CONTOUR TENSION

Electric Screens



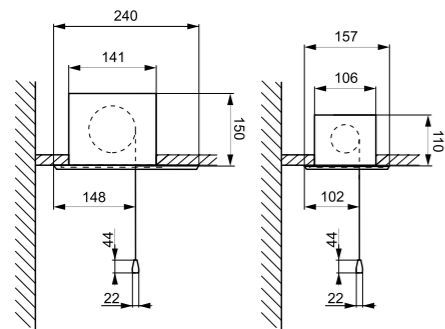
BASIC EQUIPMENT SWITCH

## FEATURES:

- White painted steel case
- Convenient 2-step screen installation
- Modular design: In-ceiling module, Screen module, Masking module
- Easy to install
- Perfect flat projection area due to the side tension system
- Black Borders
- Automatic stop for rolling and re-rolling
- Finetuning of the stop points of the fabric.
- Tubular engine with 5 years guarantee
- Power cord derivation - left side
- Easy to integrate with external control systems
- Wall control switch included.
- 4:3, 16:9 or 16:10 aspect ratios
- Fabrics width range: 180 - 300 cm
- Dedicated fabrics:
  - for home cinema: Matt Grey g=0,8, Matt White g=1,0
  - for presentation: Matt White g=1,0

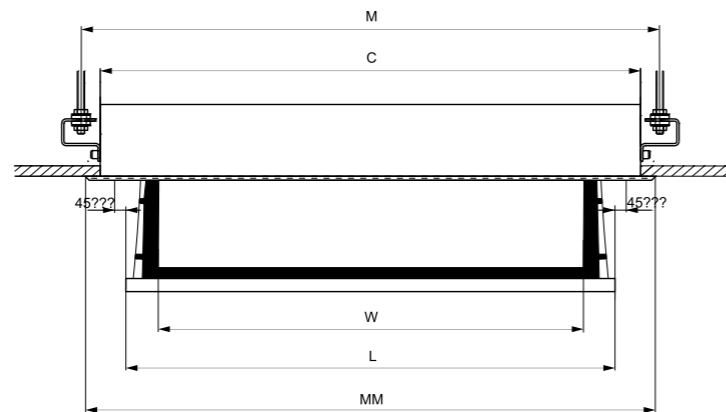
## OPTIONAL ACCESSORIES:

- IR-remote control system ALFA-IR
- Radio remote control systems ALFA-RADIO
- Projector trigger systems
  - ALFA-TRIGGER and ALFA-TRIGGER WIRELESS, BETA
- RAL palette powder painting
- Black borders
- Top belt (for 4:3, 16:9, 16:10 aspect ratio)



Cassette over 240 cm

Cassette up to 240 cm



Aspect ratio	Dimensions		Border		Bottom bar width		Image diagonal BB, BT	Brackets distance	Installation whole length	Masking module length	Weight	Transport box
	Fabrics Width	Viewable area BB, BT	BB type	BT type	BB type	BT type						
4:3	180	180 x 135	+	+	207,5	212,0	89	234,8	230,5	234,8	12,10	230 x 18 x 18
4:3	210	210 x 160	+	+	240,7	245,4	104	263,4	259,1	264,5	13,60	290 x 18 x 18
4:3	240	240 x 150	+	+	303,3	303,7	113	263,4	259,1	263,8	14,00	290 x 18 x 18
4:3	270	270 x 202	+	-	310,2	-	133	324,5	320,5	325,5	65,00	351 x 19 x 23
16:9	180	180 x 102	+	+	204,8	208,0	82	234,8	230,5	234,8	12,10	230 x 18 x 18
16:9	210	210 x 119	+	+	236,3	237,7	96	263,4	259,1	264,5	13,60	290 x 18 x 18
16:9	240	240 x 135	+	+	303,3	303,7	104	263,4	259,1	263,8	14,00	290 x 18 x 18
16:9	270	270 x 152	+	+	302,3	302,7	123	324,8	320,5	325,5	65,00	351 x 19 x 23
16:9	300	300 x 169	+	+	333,5	337,4	136	374,8	370,5	377,0	75,00	401 x 19 x 23
16:10	180	180 x 113	+	+	205,8	209,0	79	203,4	199,1	203,8	9,60	230 x 18 x 18
16:10	210	210 x 131	+	+	237,3	238,7	93	233,4	229,1	233,8	11,90	260 x 18 x 18
16:10	240	240 x 150	+	+	303,3	303,7	107	263,4	259,1	263,8	14,00	290 x 18 x 18
16:10	300	300 x 188	+	+	334,5	338,4	135	324,8	320,5	325,5	65,00	351 x 19 x 23

# CONTOUR

Electric Screens



## FEATURES:

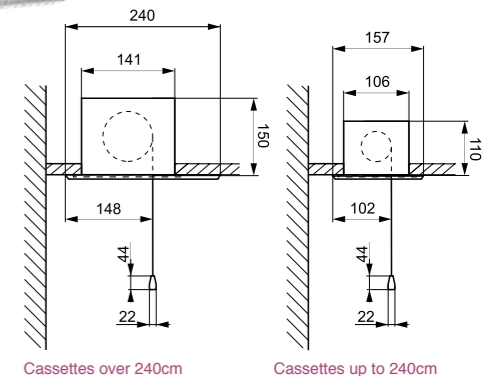
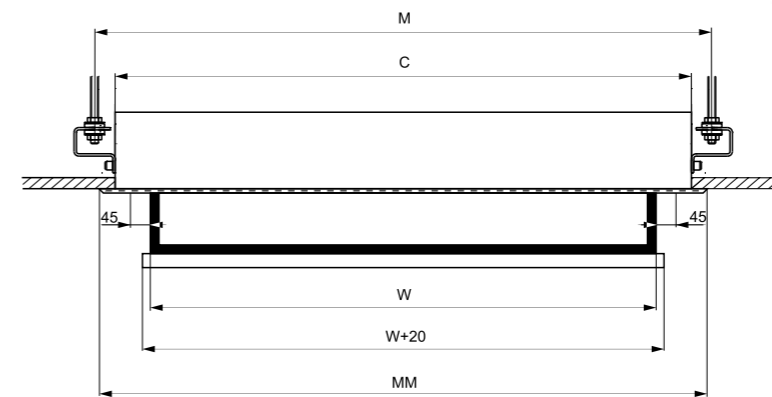
- White painted steel case
- Customized screen program capable
- Convenient 2-step screen installation
- Modular design: Inceiling module, Screen module, Masking module
- Long life of the projection fabric secured with automatic stop for rolling and re-rolling
- Custom screen installation with finetuning of the stop points for rolling and re-rolling of the projection fabric.
- 125 W silent tubular engine with 5 years guarantee
- Easy to integrate with external control systems
- Wall steering switch included
- 1:1, 4:3, 16:9 and 10 aspect ratios
- Dedicated fabrics:
  - for presentation: Silver P. g=2,8 (3D Projection), Matt White P. g=1.0 Matt White g=1,0, White Ice g=1,2, New Coral g=3,2 (Rear Projection)

## OPTIONAL ACCESSORIES:

- IR-remote control system ALFA-IR
- Radio remote control systems ALFA-RADIO
- Projector trigger systems
  - ALFA-TRIGGER and ALFA-TRIGGER WIRELESS, BETA
- Black border BB (4:3, 16:9 and 16:10 aspect ratios, MW and MG fabrics only)
- Black border BT (16:9 and 16:10 aspect ratio, MW, MG and WI fabrics only)
- RAL palette powder painting



BASIC EQUIPMENT SWITCH



Cassettes over 240cm

Cassettes up to 240cm

Aspect ratio	Dimensions			Border		Image diagonal	Image diagonal BB, BT	Brackets distance	Installation whole length	Masking Module length	Weight	Transport box
	Fabrics Width	Viewable area	Viewable area BB, BT	BB type	BT type							
	W [cm]	w x h [cm]	w x h [cm]			[cale]	[cale]	M [cm]	C [cm]	MM [cm]	[kg]	[cm]
1:1	180	180 x 180	180 x 180	-	-	100	-	203,4	199,1	204,5	9,70	230 x 18 x 18
1:1	210	210 x 210	210 x 210	-	-	117	-	233,4	229,1	234,5	12,20	260 x 18 x 18
1:1	240	240 x 240	240 x 240	-	-	134	-	263,4	259,1	264,5	14,40	290 x 18 x 18
1:1	270	270 x 270	270 x 270	-	-	150	-	294,8	290,5	297,0	52,00	320 x 19 x 23
1:1	300	300 x 300	300 x 300	-	-	167	-	324,8	320,5	325,5	65,00	351 x 19 x 23
1:1	350	350 x 350	350 x 350	-	-	195	-	374,8	370,5	377,0	75,00	401 x 19 x 23
1:1	400	400 x 400	400 x 400	-	-	223	-	424,8	420,5	427,0	85,00	451 x 19 x 23
4:3	180	180 x 135	180 x 135	+	-	89	84	203,4	199,1	204,5	9,60	230 x 18 x 18
4:3	210	210 x 160	210 x 160	+	-	104	98	233,4	229,1	234,5	12,10	260 x 18 x 18
4:3	240	240 x 180	240 x 180	+	-	118	113	263,4	259,1	264,8	14,30	290 x 18 x 18
4:3	270	270 x 202	270 x 202	+	-	133	128	294,8	290,5	297,0	52,00	320 x 19 x 23
4:3	300	300 x 225	300 x 225	+	-	148	143	324,8	320,5	325,5	65,00	351 x 19 x 23
4:3	350	350 x 263	350 x 263	+	-	172	167	374,8	370,5	377,0	75,00	401 x 19 x 23
4:3	400	400 x 300	400 x 300	+	-	197	192	424,8	420,5	427,0	85,00	451 x 19 x 23
16:9	180	180 x 102	180 x 102	+	+	82	77	203,4	199,1	204,5	9,40	230 x 18 x 18
16:9	210	210 x 119	210 x 119	+	+	96	90	233,4	229,1	234,5	11,60	260 x 18 x 18
16:9	240	240 x 135	240 x 135	+	+	109	104	263,4	259,1	264,8	13,60	290 x 18 x 18
16:9	270	270 x 152	270 x 152	+	+	123	117	294,8	290,5	297,0	52,00	320 x 19 x 23
16:9	300	300 x 169	300 x 169	+	+	136	131	324,8	320,5	325,5	65,00	351 x 19 x 23
16:9	350	350 x 197	350 x 197	+	+	158	154	374,8	370,5	377,0	75,00	401 x 19 x 23
16:9	400	400 x 225	400 x 225	+	+	181	176	424,8	420,5	427,0	85,00	451 x 19 x 23
16:10	180	180 x 113	180 x 113	+	+	84	79	203,4	199,1	204,5	9,60	230 x 18 x 18
16:10	210	210 x 131	210 x 131	+	+	98	93	233,4	229,1	234,5	11,90	260 x 18 x 18
16:10	240	240 x 150	240 x 150	+	+	112	107	263,4	259,1	264,8	14,00	290 x 18 x 18
16:10	270	270 x 169	270 x 169	+	+	126	121	294,8	290,5	297,0	52,00	320 x 19 x 23
16:10	300	300 x 188	300 x 188	+	+	140	135	324,8	320,5	325,5	65,00	351 x 19 x 23
16:10	350	350 x 219	350 x 219	+	+	162	158	374,8	370,5	377,0	75,00	401 x 19 x 23
16:10	400	400 x 250	400 x 250	+	+	186	181	424,8	420,5	427,0	85,00	451 x 19 x 23



# CUMULUS X TENSION

Electric Screens



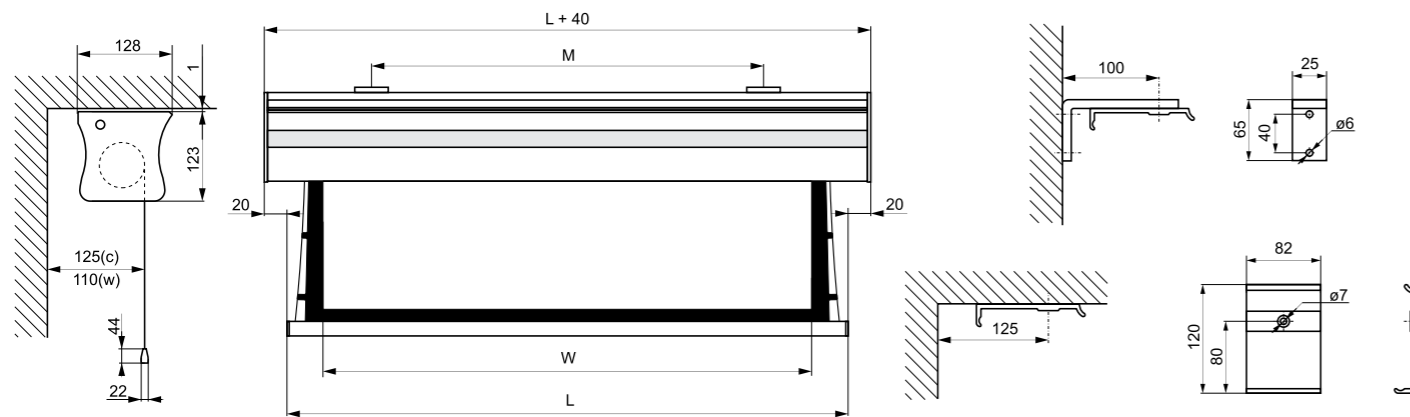
BASIC EQUIPMENT SWITCH

## FEATURES:

- White painted aluminum case with color elements
- Easy to install
- "Invisible" brackets for wall/ceiling installation included
- Perfect flat projection area due to the side tension system
- Black Borders standard
- Automatic stop for rolling and re-rolling
- Finetuning of the stop points of the fabric.
- Tubular engine with 5 years guarantee
- Power cord derivation - left side
- Easy to integrate with external control systems
- Wall control switch included.
- 4:3, 16:9 or 16:10 aspect ratios
- Fabrics width range: 180 - 270 cm
- Dedicated fabrics:
  - for home cinema: Matt Grey g=0.8, Matt White g=1.0
  - for presentation : Matt White g=1.0

## OPTIONAL ACCESSORIES:

- IR-remote control system ALFA-IR
- Radio remote control systems ALFA-RADIO
- Projector trigger systems
  - ALFA-TRIGGER and ALFA-TRIGGER WIRELESS, BETA
- RAL palette powder painting
- Black borders
- Top belt
- Wall/ceiling spacers



Aspect ratio	Dimensions		Border		Bottom bar width		Image diagonal BB, BT	Brackets distance	Weight	Transport box
	Fabrics Width	Viewable area BB, BT w x h [cm]	BB type	BT type	BB type	BT type				
4:3	180	180 x 135	+	+	207,5	212,0	84	95 - 175	9,80	230 x 18 x 18
4:3	210	210 x 160	+	+	240,7	245,4	98	110 - 205	11,70	260 x 18 x 18
4:3	240	240 x 180	+	+	273,5	280,2	113	125 - 235	13,90	290 x 18 x 18
4:3	270	270 x 202	+	-	310,2	-	128	140 - 265	15,60	320 x 18 x 18
16:9	180	180 x 102	+	+	204,8	208,0	77	95 - 175	9,50	230 x 18 x 18
16:9	210	210 x 119	+	+	236,3	237,7	90	110 - 205	11,30	260 x 18 x 18
16:9	240	240 x 135	+	+	268,0	272,0	104	125 - 235	13,50	290 x 18 x 18
16:9	270	270 x 152	+	+	302,3	302,7	117	140 - 265	15,00	320 x 18 x 18
16:10	180	180 x 113	+	+	205,8	209,0	79	95 - 175	9,70	230 x 18 x 18
16:10	210	210 x 131	+	+	237,3	238,7	93	110 - 205	11,50	260 x 18 x 18
16:10	240	240 x 150	+	+	269,0	273,0	107	125 - 235	13,70	290 x 18 x 18
16:10	270	270 x 169	+	+	303,3	303,7	121	140 - 265	15,30	320 x 18 x 18

# CUMULUS X

Electric Screens



BASIC EQUIPMENT SWITCH

## FEATURES:

- White powder painted aluminum alloy case plastic with color elements
- Customized screen program capable
- Easy to install, "invisible" installation brackets for wall or ceiling installation included
- Long life of the projection fabric secured with automatic stop for rolling and re-rolling
- Custom screen installation with finetuning of the stop points for rolling and re-rolling of the projection fabric
- 125 W silent tubular engine with 5 years guarantee
- Easy to integrate with external control systems
- Wall steering switch included
- 1:1, 4:3, 16:9 and 16:10 aspect ratios
- Fabrics width range: 180 - 350 cm
- Dedicated fabrics:
  - For home cinema: Matt White P g=1,0, Matt Grey g=0,8, Matt White g=1,0
  - For presentation : Silver P. g=2,8 (3D Projection), Matt White P g=1,0, Matt White g=1,0, White Ice g=1,2, New Coral g=3,2 (Rear Projection)

## OPTIONAL ACCESSORIES:

- IR-remote control system ALFA-IR
- Radio remote control systems ALFA-RADIO
- Projector trigger systems
  - ALFA-TRIGGER and ALFA-TRIGGER WIRELESS, BETA
- Black border BB (4:3, 16:9 and 16:10 aspect ratios, MW, MG and WI fabrics only)
- Black border BT (16:9 and 16:10 aspect ratio, MW and MG fabrics only)
- RAL palette powder painting
- Wall/ceiling spacers



Aspect ratio	Dimensions			Border		Image diagonal	Image diagonal BB, BT	Brackets distance	Weight	Transport box
	Fabrics Width	Viewable area	Viewable area BB, BT	BB type	BT type					
	W [cm]	w x h [cm]	w x h [cm]			[cale]	[cale]	M [cm]	[kg]	[cm]
1:1	180	180 x 180	-	-	-	100	-	95 - 175	8,00	200 x 18 x 18
1:1	210	210 x 210	-	-	-	117	-	110 - 205	10,00	230 x 18 x 18
1:1	240	240 x 240	-	-	-	134	-	125 - 235	12,00	260 x 18 x 18
1:1	270	270 x 270	-	-	-	150	-	140 - 265	14,00	290 x 18 x 18
1:1	300	300 x 300	-	-	-	167	-	155 - 295	16,00	320 x 18 x 18
4:3	180	180 x 135	170 x 128	+	-	89	84	95 - 175	7,80	200 x 18 x 18
4:3	210	210 x 160	200 x 150	+	-	104	98	110 - 205	9,80	230 x 18 x 18
4:3	240	240 x 180	230 x 173	+	-	118	113	125 - 235	11,70	260 x 18 x 18
4:3	270	270 x 202	260 x 195	+	-	133	128	140 - 265	13,90	290 x 18 x 18
4:3	300	300 x 225	290 x 218	+	-	148	143	155 - 295	15,60	320 x 18 x 18
16:9	180	180 x 102	170 x 96	+	+	82	77	95 - 175	7,50	200 x 18 x 18
16:9	210	210 x 119	200 x 113	+	+	96	90	110 - 205	9,50	230 x 18 x 18
16:9	240	240 x 135	230 x 129	+	+	109	104	125 - 235	11,30	260 x 18 x 18
16:9	270	270 x 152	260 x 146	+	+	123	117	140 - 265	13,50	290 x 18 x 18
16:9	300	300 x 169	290 x 163	+	+	136	131	155 - 295	15,00	320 x 18 x 18
16:10	180	180 x 113	170 x 106	+	+	84	79	95 - 175	7,60	200 x 18 x 18
16:10	210	210 x 131	200 x 125	+	+	98	93	110 - 205	9,70	230 x 18 x 18
16:10	240	240 x 150	230 x 144	+	+	112	107	125 - 235	11,50	260 x 18 x 18
16:10	270	270 x 169	260 x 163	+	+	126	121	140 - 265	13,70	290 x 18 x 18
16:10	300	300 x 188	290 x 181	+	+	140	135	155 - 295	15,30	320 x 18 x 18

# STRATUS

Electric Screens

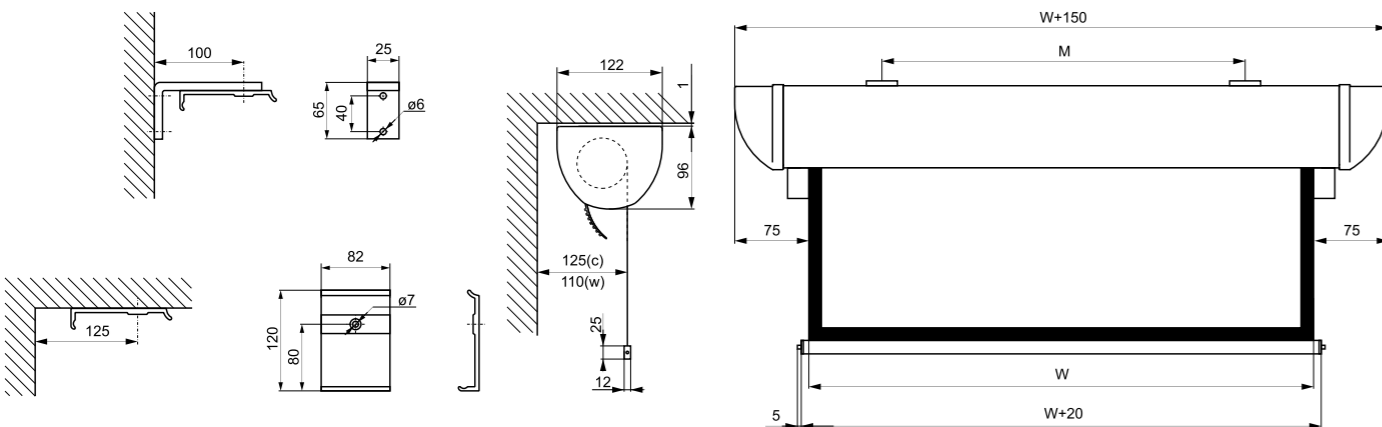


## FEATURES:

- Oval format white powder painted aluminum alloy case with bottom closing cover
- Customized screen program capable
- Easy to install, "invisible" installation brackets for wall or ceiling installation included
- Long life of the projection fabric secured with automatic stop for rolling and re-rolling
- Custom screen installation with finetuning of the stop points for rolling and re-rolling of the projection fabric.
- 125 W silent tubular engine with 5 years guarantee
- Easy to integrate with external control systems
- Wall steering switch included
- 1:1, 4:3, 16:9 and 16:10 aspect ratios
- Fabrics width range: 180 - 240 cm
- Dedicated fabrics:
  - For home cinema: Matt Grey g=0,8, Matt White g=1,0
  - For presentation: Matt White g=1,0, White Ice g=1,2, New Coral g=3,2 (Rear Projection)

## OPTIONAL ACCESSORIES:

- IR-remote control system ALFA-IR
- Radio remote control systems ALFA-RADIO
- Projector trigger systems
  - ALFA-TRIGGER and ALFA-TRIGGER WIRELESS, BETA
- Black border BB (4:3, 16:9 and 16:10 aspect ratios, MW, MG and WI fabrics only)
- Black border BT (16:9 and 16:10 aspect ratio, MW, MG and WI fabrics only)
- RAL palette powder painting
- Wall/ceiling spacers



Aspect ratio	Dimensions			Border		Image diagonal	Image diagonal BB, BT	Brackets distance	Weight	Transport box
	Fabrics Width	Viewable area	Viewable area BB, BT	BB type	BT type					
	W [cm]	w x h [cm]	w x h [cm]			[cale]	[cale]	M [cm]	[kg]	[cm]
1:1	180	180 x 180	-	-	-	100	-	95 - 175	8,00	200 x 18 x 18
1:1	210	210 x 210	-	-	-	117	-	110 - 205	10,00	230 x 18 x 18
1:1	240	240 x 240	-	-	-	134	-	125 - 235	12,00	260 x 18 x 18
4:3	180	180 x 135	170 x 128	+	-	89	84	95 - 175	7,80	200 x 18 x 18
4:3	210	210 x 160	200 x 150	+	-	104	98	110 - 205	9,80	230 x 18 x 18
4:3	240	240 x 180	230 x 173	+	-	118	113	125 - 235	11,70	260 x 18 x 18
16:9	180	180 x 102	170 x 96	+	+	82	77	95 - 175	7,50	200 x 18 x 18
16:9	210	210 x 119	200 x 113	+	+	96	90	110 - 205	9,50	230 x 18 x 18
16:9	240	240 x 135	230 x 129	+	+	109	104	125 - 235	11,30	260 x 18 x 18
16:10	180	180 x 113	170 x 106	+	+	84	79	95 - 175	7,70	200 x 18 x 18
16:10	210	210 x 131	200 x 125	+	+	98	93	110 - 205	9,70	230 x 18 x 18
16:10	240	240 x 150	230 x 144	+	+	112	107	125 - 235	11,50	260 x 18 x 18

# FOCUS

Electric Screens

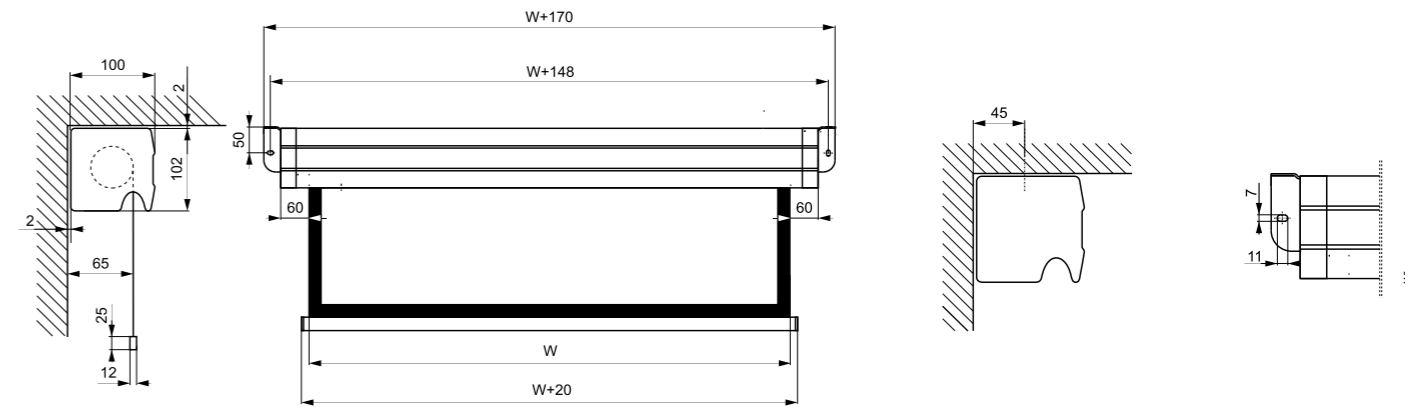


## FEATURES:

- White painted steel case
- Customized screen program capable
- Integrated, installation brackets for wall or ceiling installation
- Long life of the projection fabric secured with automatic stop for rolling and re-rolling
- Custom screen installation with finetuning of the stop points for rolling and re-rolling of the projection fabric.
- 125 W silent tubular engine with 5 years guarantee
- Easy to integrate with external control systems
- Wall steering switch included
- 1:1, 4:3, 16:9 and 16:10 aspect ratios
- Fabrics width range: 180 - 240 cm
- Available fabrics: Matt Grey E g=0,8, Matt White E g=1,0

## OPTIONAL ACCESSORIES:

- IR-remote control system ALFA-IR
- Radio remote control systems ALFA-RADIO
- Projector trigger systems
  - ALFA-TRIGGER and ALFA-TRIGGER WIRELESS, BETA
- Black border BB (4:3, 16:9 and 16:10 aspect ratios, MWE and MGE fabrics)
- Black border BT (16:9 and 16:10 aspect ratio, MWE and MGE fabrics)
- RAL palette powder painting
- Wall/ceiling spacers



Aspect ratio	Dimensions			Border		Image diagonal	Image diagonal BB, BT	Brackets distance	Weight	Transport box
	Fabrics Width	Viewable area	Viewable area BB, BT	BB type	BT type					
	W [cm]	w x h [cm]	w x h [cm]			[cale]	[cale]	M [cm]	[kg]	[cm]
1:1	180	180 x 180	-	-	-	100	-	194,8	8,00	200 x 14 x 14
1:1	210	210 x 210	-	-	-	117	-	224,8	10,00	230 x 14 x 14
1:1	240	240 x 240	-	-	-	134	-	254,8	12,00	260 x 14 x 14
4:3	180	180 x 135	170 x 128	+	-	89	84	194,8	7,80	200 x 14 x 14
4:3	210	210 x 160	200 x 150	+	-	104	98	224,8	9,80	230 x 14 x 14
4:3	240	240 x 180	230 x 173	+	-	118	113	254,8	11,70	260 x 14 x 14
16:9	180	180 x 102	170 x 96	+	+	82	77	194,8	7,50	200 x 14 x 14
16:9	210	210 x 119	200 x 113	+	+	96	90	224,8	9,50	230 x 14 x 14
16:9	240	240 x 135	230 x 129	+	+	109	104	254,8	11,30	260 x 14 x 14
16:10	180	180 x 113	170 x 106	+	+	84	79	194,8	7,70	200 x 14 x 14
16:10	210	210 x 131	200 x 125	+	+	98	93	224,8	9,70	230 x 14 x 14
16:10	240	240 x 150	230 x 144	+	+	112	107	254,8	11,50	260 x 14 x 14





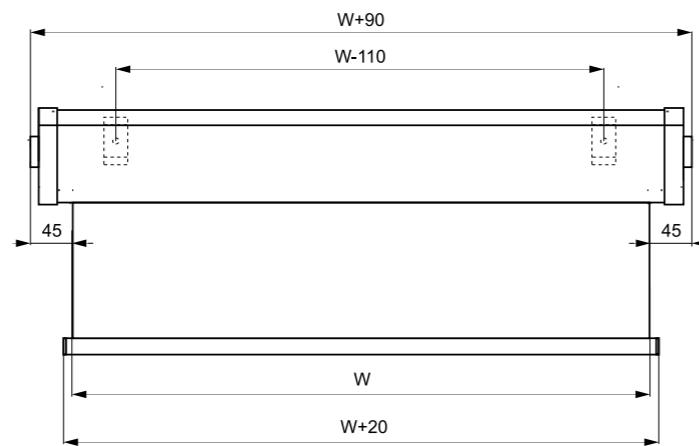
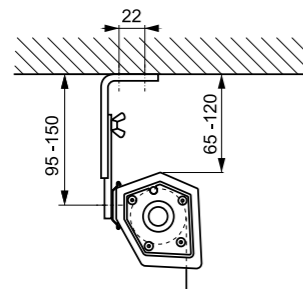
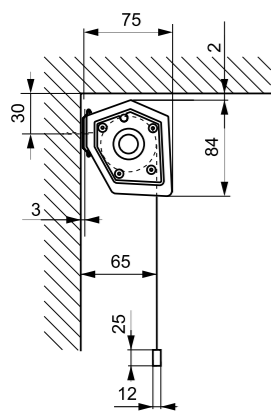
BASIC EQUIPMENT SWITCH

### FEATURES:

- White painted steel case
- Easy screen installation
- Installation brackets integrated with the screen case
- Custom screen installation with fine tuning of the stop points for rolling and re-rolling of the projection fabric
- 100 W silent tubular engine with 5 years guarantee
- Easy to integrate with external control systems
- Wire steering with the wall switch included
- 1:1 aspect ratios
- Projection fabrics: Matt White E g=1,0

### OPTIONAL ACCESSORIES:

- IR-remote control system ALFA-IR
- Radio remote control systems ALFA-RADIO
- Projector trigger systems  
ALFA-TRIGGER and ALFA-TRIGGER WIRELESS, BETA



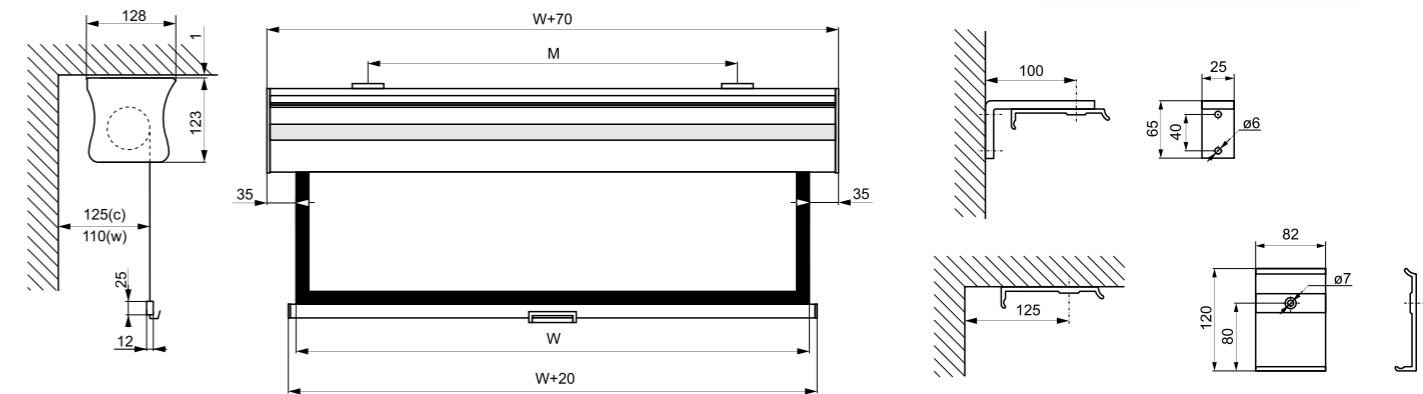
Aspect ratio	Dimensions			Border		Image diagonal	Image diagonal BB, BT	Brackets distance	Weight	Transport box
	Fabrics Width	Viewable area	Viewable area BB, BT	BB type	BT type					
	W [cm]	w x h [cm]	w x h [cm]			[cale]	[cale]	M [cm]	[kg]	[cm]
1:1	180	180 x 180	-	-	-	100	-	194,8	8,00	200 x 14 x 14
1:1	210	210 x 210	-	-	-	117	-	224,8	10,00	230 x 14 x 14

### FEATURES:

- White painted aluminum case with color elements
- Customized screen program capable
- Easy to install
- "Invisible" brackets for wall/ceiling installation included
- Reliable spring mechanism
- Integrated safety brake
- 1:1, 4:3, 16:9 and 16:10 aspect ratios
- Fabrics width range: 180 - 300 cm
- Dedicated fabrics:
  - for home cinema: Matt Grey g=0,8, Matt White g=1,0
  - for presentation : Matt White g=1,0, White ice g=1,2, New Coral g=3,2 (Rear Projection)

### OPTIONAL ACCESSORIES:

- RAL palette powder painting
- Black border BB (4:3, 16:9 and 16:10 aspect ratios, MW, MG and WI fabrics only)
- Black border BT (16:9 and 16:10 aspect ratio, MW, MG and WI fabrics only)
- Wall/ceiling spacers



Aspect ratio	Dimensions			Border		Image diagonal	Image diagonal BB, BT	Brackets distance	Weight	Transport box
	Fabrics Width	Viewable area	Viewable area BB, BT	BB type	BT type					
	W [cm]	w x h [cm]	w x h [cm]			[cale]	[cale]	M [cm]	[kg]	[cm]
1:1	180	180 x 180	-	-	-	100	-	95 - 175	6,50	200 x 18 x 18
1:1	210	210 x 210	-	-	-	117	-	110 - 205	8,00	230 x 18 x 18
1:1	240	240 x 240	-	-	-	134	-	125 - 235	10,00	260 x 18 x 18
4:3	180	180 x 135	170 x 128	+	-	89	84	95 - 175	6,20	200 x 18 x 18
4:3	210	210 x 160	200 x 150	+	-	104	98	110 - 205	7,70	230 x 18 x 18
4:3	240	240 x 180	230 x 173	+	-	118	113	125 - 235	8,70	260 x 18 x 18
4:3	270	270 x 202	260 x 195	+	-	133	128	140 - 265	11,90	290 x 18 x 18
4:3	300	300 x 225	290 x 218	+	-	148	143	155 - 295	14,60	320 x 18 x 18
16:9	180	180 x 102	170 x 96	+	+	82	77	95 - 175	6,00	200 x 18 x 18
16:9	210	210 x 119	200 x 113	+	+	96	90	110 - 205	7,40	230 x 18 x 18
16:9	240	240 x 135	230 x 129	+	+	109	104	125 - 235	8,40	260 x 18 x 18
16:9	270	270 x 152	260 x 146	+	+	123	117	140 - 265	11,30	290 x 18 x 18
16:9	300	300 x 169	290 x 163	+	+	136	131	155 - 295	13,50	320 x 18 x 18
16:10	180	180 x 113	170 x 106	+	+	84	79	95 - 175	6,10	200 x 18 x 18
16:10	210	210 x 131	200 x 125	+	+	98	93	110 - 205	7,60	230 x 18 x 18
16:10	240	240 x 150	230 x 144	+	+	112	107	125 - 235	8,50	260 x 18 x 18
16:10	270	270 x 169	260 x 163	+	+	126	121	140 - 265	11,60	290 x 18 x 18
16:10	300	300 x 188	290 x 181	+	+	140	135	155 - 295	13,80	320 x 18 x 18

# CIRRUS X CRANK

Manual Screens

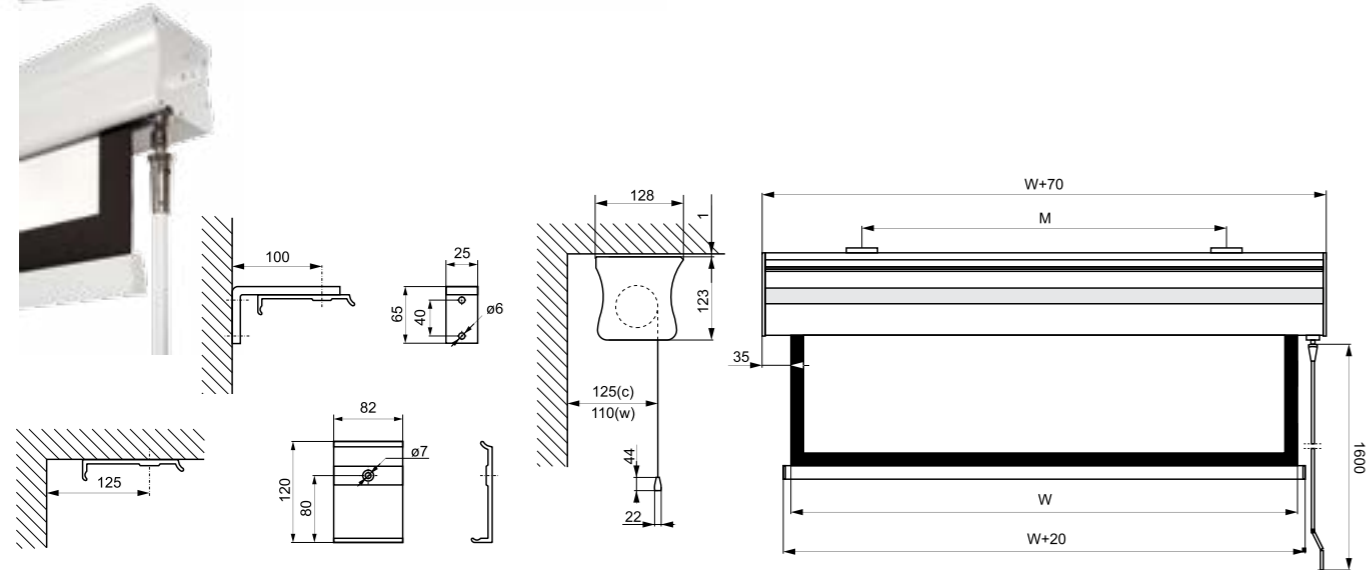


## FEATURES:

- White powder painted aluminum alloy case plastic with color elements
- Customized screen program capable
- Easy to install, "invisible" installation brackets for wall or ceiling installation included
- Reliable crank mechanism
- 1:1, 4:3, 16:9 and 16:10 aspect ratios
- Fabrics width range: 180 - 300 cm
- Dedicated fabrics:
  - For home cinema: Matt Grey g=0,8, Matt White g=1,0
  - For presentation: Matt White P g=1,0, Matt White g=1,0 White Ice g=1,2, New Coral g=3,2 (Rear Projection)

## OPTIONAL ACCESSORIES:

- Black border BB (4:3, 16:9 and 16:10 aspect ratios, MW, MG and WI fabrics only)
- Black border BT (16:9 and 16:10 aspect ratio, MW, MG and WI fabrics only)
- RAL palette powder painting
- Wall/ceiling spacers



Aspect ratio	Dimensions			Border		Image diagonal	Image diagonal BB, BT	Brackets distance	Weight	Transport box
	Fabrics Width	Viewable area	Viewable area BB, BT	BB type	BT type					
	W [cm]	w x h [cm]	w x h [cm]			[cale]	[cale]	M [cm]	[kg]	[cm]
1:1	180	180 x 180	-	-	-	100	-	95 - 175	6,50	200 x 18 x 18
1:1	210	210 x 210	-	-	-	117	-	110 - 205	8,00	230 x 18 x 18
1:1	240	240 x 240	-	-	-	134	-	125 - 235	10,00	260 x 18 x 18
4:3	180	180 x 135	170 x 128	+	-	89	84	95 - 175	6,20	200 x 18 x 18
4:3	210	210 x 160	200 x 150	+	-	104	98	110 - 205	7,70	230 x 18 x 18
4:3	240	240 x 180	230 x 173	+	-	118	113	125 - 235	8,70	260 x 18 x 18
4:3	270	270 x 202	260 x 195	+	-	133	128	140 - 265	11,90	290 x 18 x 18
4:3	300	300 x 225	290 x 218	+	-	148	143	155 - 295	14,60	320 x 18 x 18
16:9	180	180 x 102	170 x 96	+	+	82	77	95 - 175	5,90	200 x 18 x 18
16:9	210	210 x 119	200 x 113	+	+	96	90	110 - 205	7,40	230 x 18 x 18
16:9	240	240 x 135	230 x 129	+	+	109	104	125 - 235	8,40	260 x 18 x 18
16:9	270	270 x 152	260 x 146	+	+	123	117	140 - 265	11,30	290 x 18 x 18
16:9	300	300 x 169	290 x 163	+	+	136	131	155 - 295	13,50	320 x 18 x 18
16:10	180	180 x 113	170 x 106	+	+	84	79	95 - 175	6,00	200 x 18 x 18
16:10	210	210 x 131	200 x 125	+	+	98	93	110 - 205	7,60	230 x 18 x 18
16:10	240	240 x 150	230 x 144	+	+	112	107	125 - 235	8,50	260 x 18 x 18
16:10	270	270 x 169	260 x 163	+	+	126	121	140 - 265	11,60	290 x 18 x 18
16:10	300	300 x 188	290 x 181	+	+	140	135	155 - 295	13,80	320 x 18 x 18

# CIRRUS CL

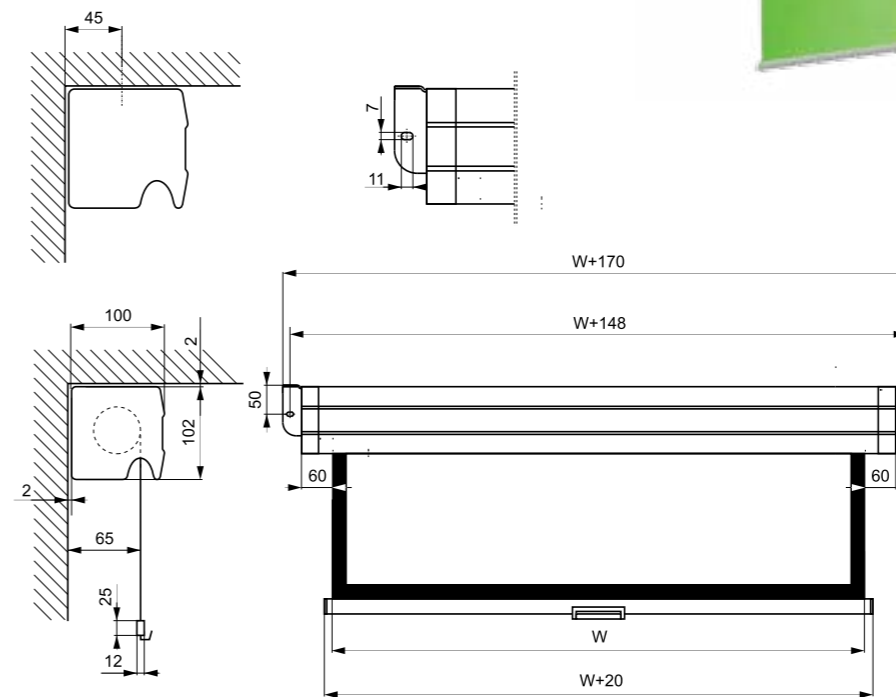
Manual Screens

## FEATURES:

- White painted steel case
- Integrated, installation brackets for wall or ceiling installation
- Reliable spring mechanism
- 1:1, 4:3, 16:9 and 16:10 aspect ratios
- Fabrics width range: 180 - 240 cm
- Available fabrics: Matt Grey E g=0,8, Matt White E g=1,0

## OPTIONAL ACCESSORIES:

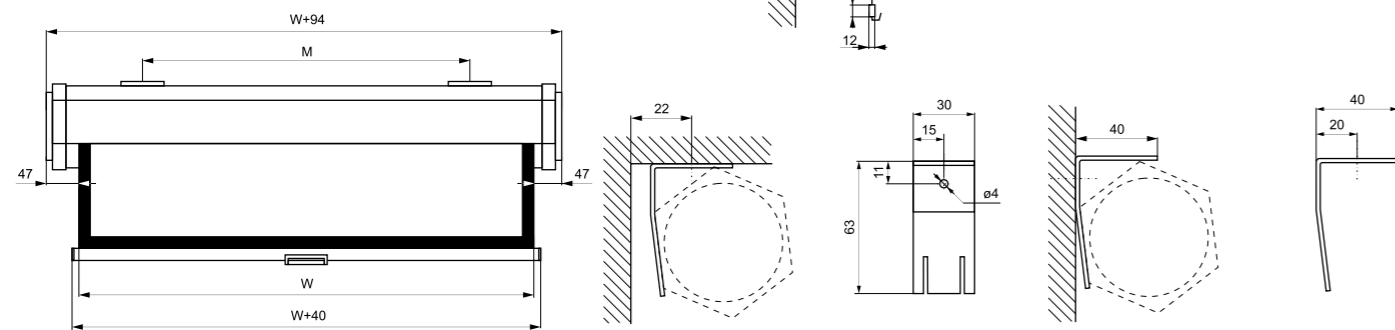
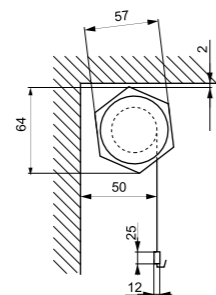
- Black border BB (4:3, 16:9 and 16:10 aspect ratios, MWE and MGE fabrics)
- Black border BT (16:9 and 16:10 aspect ratio, MWE and MGE fabrics)
- RAL palette powder painting
- Wall/ceiling spacers



Aspect ratio	Dimensions			Border		Image diagonal	Image diagonal BB, BT	Brackets distance	Weight	Transport box
	Fabrics Width	Viewable area	Viewable area BB, BT	BB type	BT type					
	W [cm]	w x h [cm]	w x h [cm]			[cale]	[cale]	M [cm]	[kg]	[cm]
1:1	180	180 x 180	-	-	-	100	-	194,8	8,00	200 x 14 x 14
1:1	210	210 x 210	-	-	-	117	-	224,8	10,00	230 x 14 x 14
1:1	240	240 x 240	-	-	-	134	-	254,8	12,00	260 x 14 x 14
4:3	180	180 x 135	170 x 128	+	-	89	84	194,8	7,80	200 x 14 x 14
4:3	210	210 x 160	200 x 150	+	-	104	98	224,8	9,80	230 x 14 x 14
4:3	240	240 x 180	230 x 173	+	-	118	113	254,8	11,70	260 x 14 x 14
16:9	180	180 x 102	170 x 96	+	+	82	77	194,8	7,50	200 x 14 x 14
16:9	210	210 x 119	200 x 113	+	+	96	90	224,8	9,50	230 x 14 x 14
16:9	240	240 x 135	230 x 129	+	+	109	104	254,8	11,30	260 x 14 x 14
16:10	180	180 x 113	170 x 106	+	+	84	79	194,8	7,70	200 x 14 x 14
16:10	210	210 x 131	200 x 125	+	+	98	93	224,8	9,70	230 x 14 x 14
16:10	240	240 x 150	230 x 144	+	+	112	107	254,8	11,50	260 x 14 x 14

# ALTUS

Manual Screens



Aspect ratio	Dimensions			Border		Image diagonal	Image diagonal BB, BT	Brackets distance	Weight	Transport box
	Fabrics Width	Viewable area	Viewable area BB, BT	BB type	BT type					
	W [cm]	w x h [cm]	w x h [cm]			[cale]	[cale]	M [cm]	[kg]	[cm]
1:1	150	150 x 150	-	-	-	84	-	144	7,00	166 x 10 x 10
1:1	180	180 x 180	-	-	-	100	-	174	10,00	200 x 10 x 10

## FEATURES:

- Easy to install, "Invisible" installation brackets for wall or ceiling installation included
- Reliable spring mechanism
- 1:1 aspect ratio
- Fabrics width range: 150 - 180 cm
- Dedicated fabrics: Matt White E g=1,0  
Matt Grey E g=0,8 White Ice g=1,2  
New Coral g=3,2 (rear projection)

## OPTIONAL ACCESSORIES:

- RAL palette powder painting
- Wall/ceiling spacers

# NIMBUS

Frame Screens

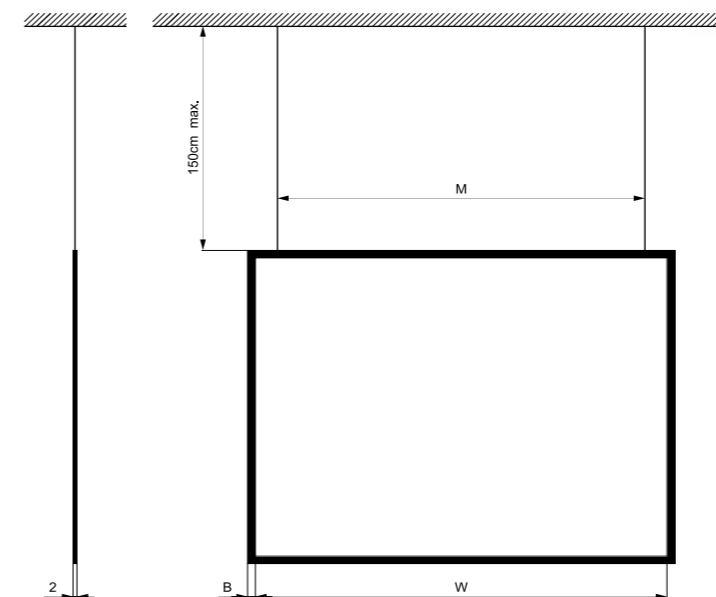


## FEATURES:

- Black powder painted aluminum alloy profile frame
- Easy to install, installation brackets for wall or ceiling installation included
- Installation steel cables (1,5m) for wall/ceiling installation included
- 4:3, 16:9 and 16:10 aspect ratio
- Fabrics width range: 150 - 300 cm
- Dedicated fabrics:
  - Front projection: White Glass g=1,0
  - Rear projection: Holo Glass g=4,0, Grey Glass DS g=4,0
  - Grey Glass HC g=4,6

## OPTIONAL ACCESSORIES:

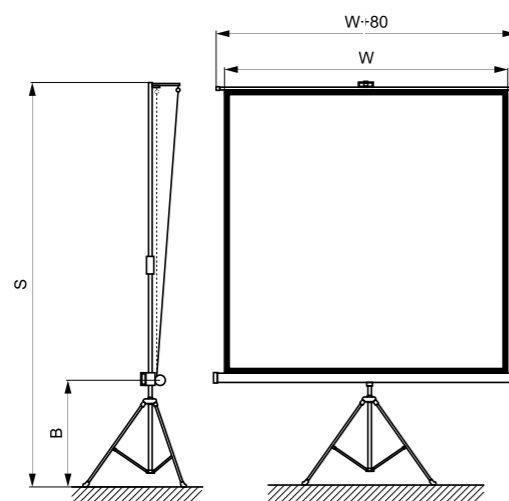
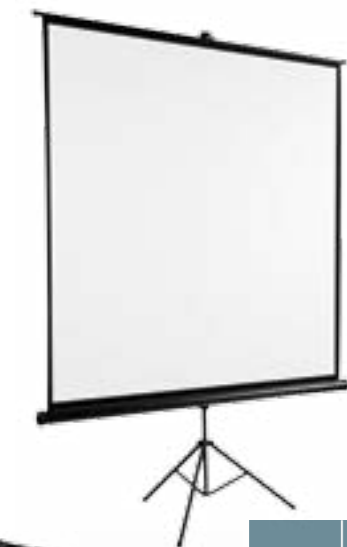
- Nimbus Wing wall side-mount installation bracket max. 200cm
- Wall/ceiling fixing holders
- RAL palette powder painting
- Wall/ceiling spacers



Aspect ratio	Dimensions		Border width	Image diagonal	Brackets distance	Weight	Transport box
	Fabrics Width	Viewable area					
	W [cm]	w x h [cm]	B [cm]	[cale]	M [cm]	[kg]	[cm]
4:3	150	150 x 112	3	74	136	5,00	166 x 128 x 6
4:3	180	180 x 135	3	89	166	7,00	196 x 151 x 6
4:3	200	200 x 150	4	98	198	8,00	216 x 165 x 6
4:3	240	240 x 180	4	118	228	9,00	258 x 198 x 6
4:3	270	270 x 202	4	133	258	12,00	288 x 220 x 6
16:9	150	150 x 84	3	68	136	4,00	166 x 100 x 6
16:9	180	180 x 102	3	81	166	6,00	196 x 118 x 6
16:9	200	200 x 112	4	90	198	7,00	216 x 129 x 6
16:9	240	240 x 135	4	108	228	8,00	258 x 153 x 6
16:9	270	270 x 152	4	122	258	12,00	288 x 170 x 6
16:9	300	300 x 169	4	136	288	15,30	328 x 187 x 6
16:10	150	150 x 94	3	70	136	4,50	166 x 110 x 6
16:10	180	180 x 113	3	84	166	6,50	196 x 129 x 6
16:10	200	200 x 125	4	93	198	7,50	216 x 141 x 6
16:10	240	240 x 150	4	111	228	8,50	258 x 168 x 6
16:10	270	270 x 169	4	125	258	12,50	288 x 187 x 6
16:10	300	300 x 188	4	139	288	15,80	328 x 206 x 6

# TRIPOD

Manual Screens



## FEATURES:

- Black powder painted steel alloy case plastic with side
- Easy to install tripod stand
- Reliable spring mechanism
- 7-step Keystone compensation capable
- 1:1 aspect ratio
- Fabrics width range: 125 - 240 cm
- Fabrics Matt White E g=1,0 with black borders

## OPTIONAL ACCESSORIES:

- Soft travel case

Aspect ratio	Dimensions		Border	Image diagonal	Stand height	Case height	Weight	Transport box
	Fabrics Width	Viewable area						
	W [cm]	w x h [cm]	BB type	[cale]	S [cm]	B [cm]	[kg]	[cm]
1:1	133	127 x 127	+	74	140 - 230	50 - 120	7,00	148 x 13 x 17,5
1:1	158	152 x 152	+	88	170 - 260	50 - 120	8,00	174 x 13 x 17,5
1:1	184	178 x 178	+	102	170 - 260	50 - 120	9,00	199 x 13 x 17,5
1:1	211	203 x 203	+	117	200 - 300	50 - 135	11,00	224 x 13 x 17,5
1:1	244	236 x 236	+	136	200 - 320	50 - 140	14,00	259 x 13 x 17,5





## ALFA-IR

Infrared remote control system for all Avers electric screens and lifts.

### FEATURES:

- Dealer installable option
- Infrared control signal transmission
- Control unit with separate case
- Wall switch with integrated IR receiver
- Operation with more than one remote transmitters available
- Operation in case of remote transmitter failure possible
- Operation range - ca. 7 meters

### OPTIONAL ACCESSORIES:

- Additional infrared remote transmitter

## ALFA-RADIO

Radio remote control system for all Avers electric screens and lifts.

### FEATURES:

- Dealer installable option
- Radio control signal transmission
- Designed for wall surface installation
- Control unit with separate case
- Extra wall switch
- Dedicated with multimedia projectors trigger output terminal
- Operation with more than one remote transmitters available (up to 20 psc)
- Operation in case of remote transmitter failure possible
- Operation range – open space ca. 100 meters, indoors ca. 35 meters

### OPTIONAL ACCESSORIES:

- Additional radio remote transmitter



## ALFA-TRIGGER

Triggered wired remote control system for all Avers electric screens  
Compatible with multimedia projectors with Trigger output terminal.

### FEATURES:

- Dealer installable option
- Wired control signal transmission
- Control unit with separate case
- Manual control function

### OPTIONAL ACCESSORIES:

- Additional radio and infrared remote transmitter
- Additional remote control radio signal transmission
- Additional wall switch



## ALFA-TRIGGER WIRELESS

Triggered wireless remote control system for all Avers electric screens  
Compatible with multimedia projectors with Trigger output terminal.

### FEATURES:

- Dealer installable option
- Wireless radio control signal transmission
- Control unit with separate case
- Manual control function
- Operation range – open space ca. 100 meters, indoors ca. 35 meters

### OPTIONAL ACCESSORIES:

- Additional radio and infrared remote transmitter
- Additional remote control radio signal transmission
- Additional wall switch
- Optionally wired control signal transmission



Electric screens and lifts can be controlled manually or automatically. Remote control systems improves flexibility of the products and comfort of operation. Based on the experience of our partners we have prepared wide range of diversified remote control systems dedicated for Avers screens and lifts. We keep in our offer control systems dedicated for external installation to be installed during system integration by integrator himself as well as build-in the screen case, integrated at the factory.

## BETA

Remote control system triggered by increase of projector power consumption.

### FEATURES:

- Dealer installable option
- Control unit with separate case
- System controlling two types of diveces (first type – screen and lift or second type two Virgo system f.e.)
- Programmable power consumption level required to trigger system operation
- Equiped with infrared receiver and infrared transmitter dedicated to pass projector control signal from projector IR transmitter to projector installed over the in ceiling.

### OPTIONAL ACCESSORIES

- Extra wall switch

## DELTA

Optional remote control system dedicated for Avers electric screens

### FEATURES:

- Factory installable option
- Radio control signal transmission
- Control unit buit-in the screen case
- Operation with more than one remote transmitters available (up to 10 psc)
- Operation range - ca. 20 meters



# BRACKETS

Accessories

## AluMont

Features:

- Aluminium alloy design
- Express installation (10 minutes) ready
- Projector cables can be hidden in the bracket column
- Reliable universal projector mount system with 3 or 4 fixing arms
- 3 dimensional projector tilt regulation
- Projector weight – up to 12 kg
- Cover hiding ceiling fixing screws

Available sizes:

- Short - fixed length - 135 mm
- Standard - zoom length - 340-540 mm
- Long - zoom length - 500-700 mm

Optional accessories:

- Customized length column, ask dealer for details



## SimpleMount

Features:

- Aluminium design column
- Express installation (10 minutes) ready,
- Reliable universal projector mount system with 3 or 4 fixing arms
- 3 dimensional projector tilt regulation
- Projector weight – below 10 kg

Available sizes:

- Short - fixed length - 78 mm
- Standard - zoom length - 455-640 mm



## ProMount

Features:

- Powder silver painted steel design
- Express installation (10 minutes) ready,
- Projector cables can be hidden in the bracket column
- Reliable universal projector mount system with 3 or 4 fixing arms
- 3 dimensional projector tilt regulation
- Projector weight – up to 15 kg
- Ceiling/wall installable (Standard version only)

Available sizes:

- Short - fixed length - 100 mm
- Standard - zoom length - 385-800 mm
- Long - zoom length - 785-1200 mm

Optional accessories:

- Customized length column, ask dealer for details
- RAL palette powder painting



## Short Mount

Features:

- Modern steel design
- Express installation (10 minutes) ready
- Projector cables can be hidden in the bracket column
- Reliable universal projector mount system with 4 fixing arms max. 370 mm
- 3 dimensional tilt regulation
- Projector weight - up to 10 kg

Available sizes:

- Standard - fixed length 600-850 mm
- Long - fixed length 850-1200 mm

# LIFTS

Accessories

Projector ceiling lift with regulation range up to 500mm. Designed for hidden installations behind recessed ceiling.



## ProLift

Features:

- Powder painted grey design
- Reliable universal projector mount system with 3 or 4 fixing arms
- 3 dimensional projector tilt regulation
- 125 W silent tubular engine with 5 years guarantee
- Fine tuning of the upper and lower stop points.
- Projector weight – below 10 kg

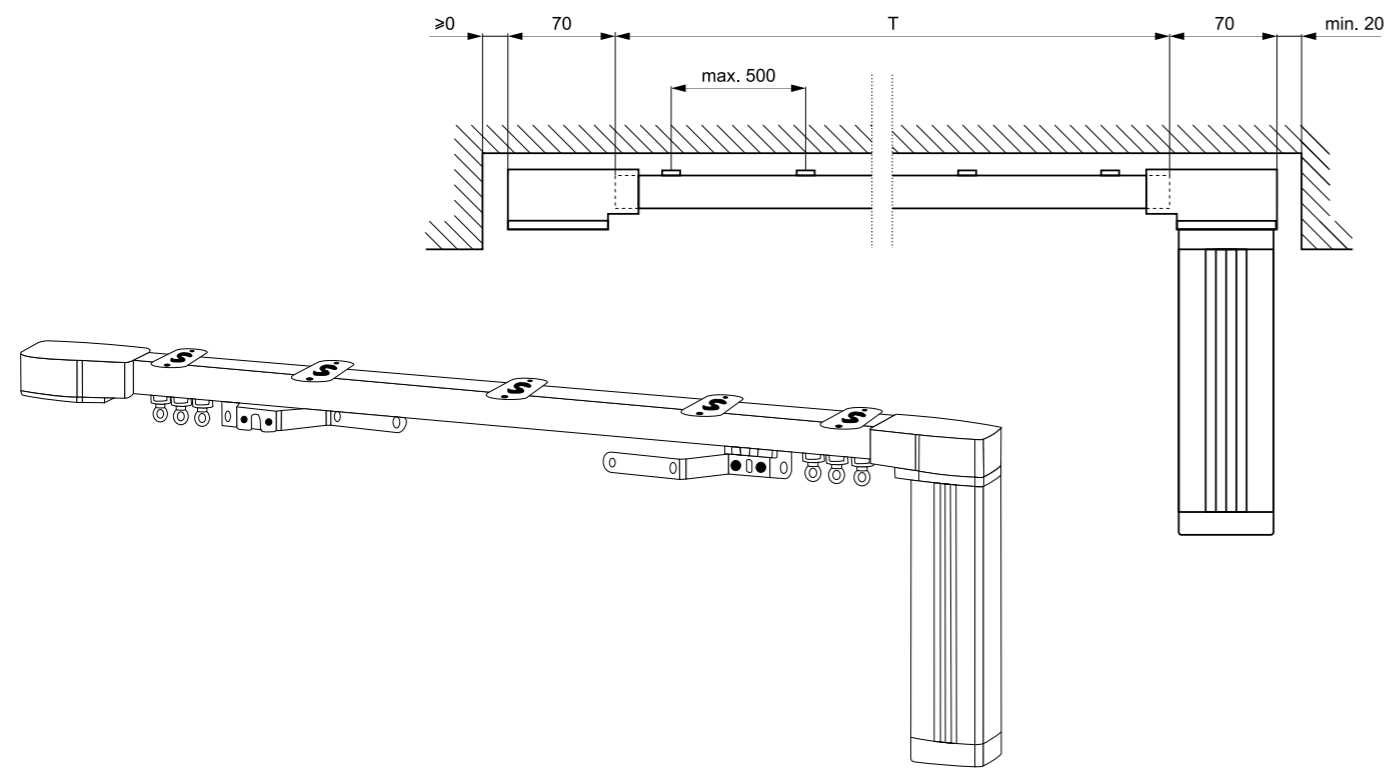
Available sizes:

- Prolift 300 – regulation range 300 mm
- Prolift 400 – regulation range 400 mm
- Prolift 500 – regulation range 500 mm

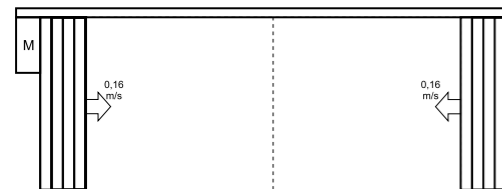
Optional accessories:

- Customized length column, ask dealer for details
- RAL palette powder painting
- Radio remote control system (CRC-2, DRC-2, C12VRC)
- ProLift Flap (dedicated for 60x60 cm segment recessed ceiling)

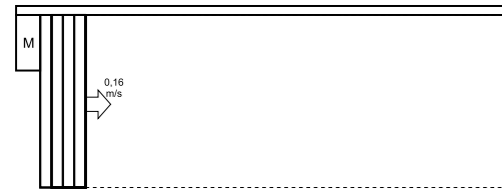




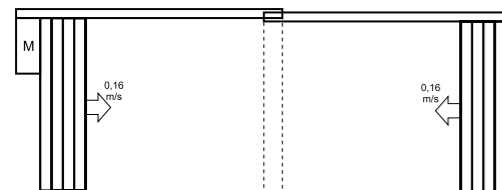
Center opening curtains. Maximum set length 12 m.



One side opening curtains. Maximum set length 12 m.



Two one side opening curtain systems. Maximum length 24 m.

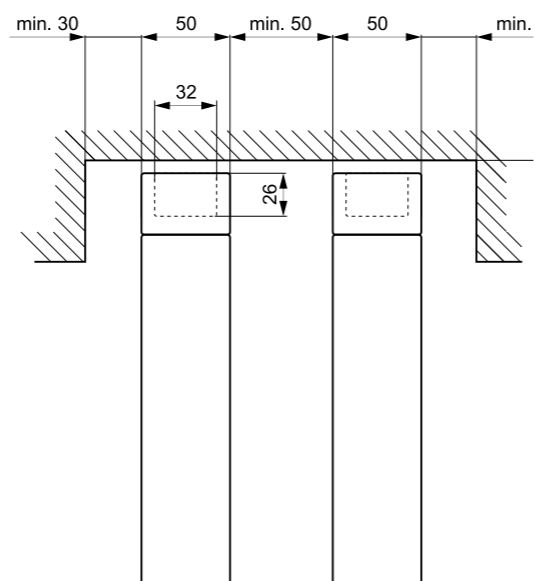


**Features:**

- silent electric motor
- Modular aluminium alloy track
- Master carriers driven with flexible timing belt
- Track range: 250 – 1200cm
- Maximum curtains weight: 20 - 60 kg
- Carrier line speed: 0,16m/s
- Recommended distance between curtain runners: 10cm
- All installation accessories in set
- One side or center opening capable
- Drive units and motor masking hooks included
- Customized screen program capable

**Optional accessories:**

- IR-remote control system (CRC-IR)
- Radio remote control systems (CRC, DRC)
- Projector trigger systems (C12VRC, C12V)
- Key locked wall switch



**ALFA-SWITCH**

Optional wall switch with integrated IR receiver (utilised for ALFA-IR control system)



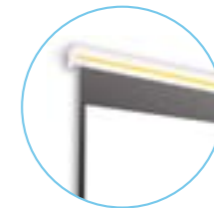
**BB**

Black screen border, 5 cm width (available at 4:3, 16:9 and 16:10 aspect ratio screens)



**Remote transmitter ALFA-IR/ALFA-RADIO/DELTA**

Optional remote transmitter dedicated for ALFA control system



**BT**

Black screen border, 5 cm width + black top belt, 30 cm width (available at 16:9 and 16:10 aspect ratio screens only)



**Wireless Trigger transmitter**

Optional remote transmitter dedicated for ALFA TRIGGER control system



**NIMBUS Wing**

Vertical installation bracket dedicated for Nimbus screens allows screen rotation along the screen vertical edge (max. screen size 200x150cm)



**TC12-15**

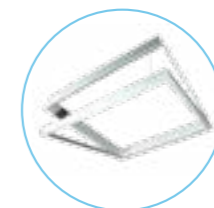
Transport bag dedicated for Tripod12 and Tripod15

**TC18-20**

Transport bag dedicated for Tripod18 and Tripod20

**TC24**

Transport bag dedicated for Tripod 24



**Prolift Flap**

Flap mechanism dedicated for installation at segmented recessed ceilings (60x60 cm standard)



**RAL color**

All case parts made with metal and finished with any paint coating can be optionally painted to custom color defined with the RAL color palette.



**SH Holder**

all/ceiling 60 cm spacer for all fixed screens (electric, manual and frame) installation



**Installation set**

Additional set of brackets for screen wall/ceiling installation (each screen is supplied with 2 installation sets as a standard)



**SRMS**

Brackets dedicated for screen installation under recessed ceiling





THE RIGHT POINT OF VIEW

This folder was published by Avers Screens sp. z o.o. All illustrations, colors and technical data may change. Avers Screens sp. z o.o. has all rights to make any necessary changes to the introduces screens, their elements and accessories on account of marketing and design issues. Made in Poland. Avers Screens 2012.

[avers@aversscreens.eu](mailto:avers@aversscreens.eu)  
[avers@avers.com.pl](mailto:avers@avers.com.pl)  
[avers@aversscreens.pl](mailto:avers@aversscreens.pl)

[aversscreens.eu](http://aversscreens.eu)  
[avers.com.pl](http://avers.com.pl)  
[aversscreens.pl](http://aversscreens.pl)

